

Jump to...

Moodle ► GForms101 ► Lessons ► LESSON 5.4 - Branching Quiz Questions Update this Lesson Edit page contents

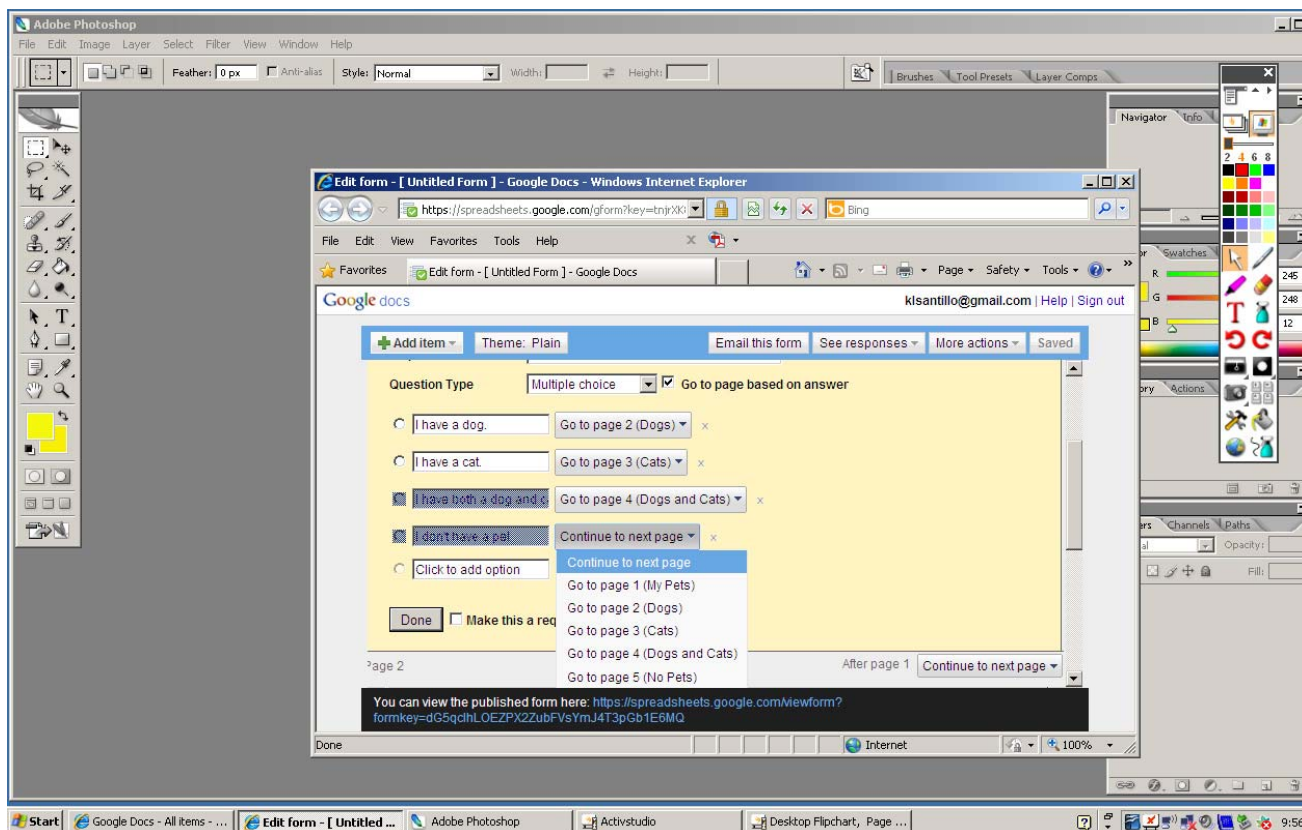
## LESSON 5.4 - Branching Quiz Questions

Preview Edit Reports Grade Essays

After creating a page break to direct each multiple choice response from your branch-beginning question, create one more for the branch-ending page. There can be additional questions on the branch-ending page that everyone answers, or you can simply a general message on it, such as "Thank you! You're all done. Please click SUBMIT."

Once the page breaks are created, go back to the branch-beginning multiple choice question that has all of the nifty new buttons on it, as shown below.

Select the correct page from the drop-down menu next to each possible answer. You can see that if a student answers, *I have a dog*, the student will be directed to answer questions on page 2, which are all of the dog-related questions under the page break heading *Dogs*. Click DONE when you are finished directing each response to the corresponding page.



Continue

Moodle Docs for this page

You are logged in as [Kathe Santillo \(Logout\)](#)

GForms101